

DERBYSHIRE JOINT AREA PRESCRIBING COMMITTEE (JAPC)



Guidelines for the prescribing of Stoma Accessories

New stoma patients will be discharged from hospital with at least 2 weeks supply of products.

They will have contact with a Specialist Stoma Nurse within 7 working days of discharge, who will manage the patient's product requirements until they become stable.

The nurse will support the patient to decide on the most appropriate supply route for their appliance products; Community Pharmacy, Dispensing GP or Dispensing Appliance Contractor (DAC).

- Chesterfield Royal Hospital (CRH):**

On discharge all new stoma patients are given a choice dependent on co-morbidities, mobility, access to transport etc., to receive post-operative follow up care either by a community stoma care nurse attached to a DAC or to be seen by the stoma care team in the outpatient department at CRH.

For the first 4-6 weeks the patients' stoma requirements may change as the healing process continues and prescriptions within this time will be requested according to need.

- Derby Teaching Hospitals:**

Once the patient is home specialist community nurse (SCN) will assess in the first 6 weeks the patient's requirements and prescriptions will be requested according to need. If unusual /exceptional circumstances where additional products are required SCN will contact GP directly.

Stoma bags (pouches), flanges or belts need to be individually tailored and hence can not be included in a formulary. For these prescriptions, **GP practices should check the quantities being requested are reasonable as follows:**

Appropriate Quantities and use for stoma items (table1)

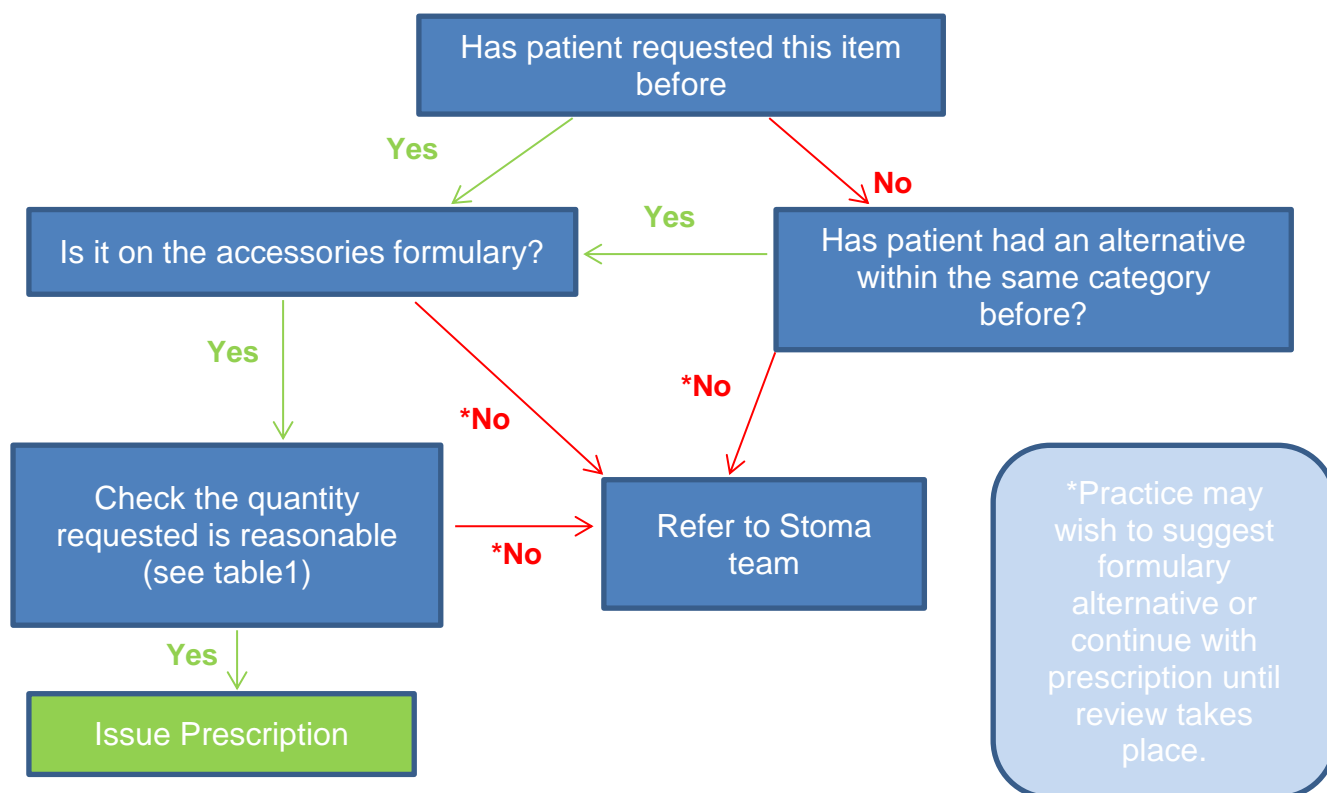
Appliance	Quantity per month	Prescriptions directions	Normal Usage	Notes
Colostomy bags	30-90 bags	Remove and discard after use.	1 – 3 per day	Not re-usable. Can be 1 or 2 piece.
Ileostomy bags	10-30 bags	Drain as required. Use new bag every 1-3 days.	1 every 1 to 3 days	Drainable. Can be 1 or 2 piece.
Urostomy bags	20-30 bags	Drain as required. Use new bag every 1-3 days.	1 every 1 to 3 days	Drainable. Can be 1 or 2 piece. Require additional night bag.
Night drainage bags	4 bags (1 box of 10 bags every 2-3 months)	Use a new bag every 7 days.	1 per week	Drainable. Rinse as directed by stoma care nurse.
Flange (for 2 piece system)	15 flanges	Change every 2-3 days.	1 every 2 to 3 days	The flange is not changed at every bag change.
Bag Belts – correct according to product	3-6 per year	Usage may vary	variable	Washable and re-usable

Stoma Accessories Formulary

The Specialist Stoma Nurses have devised a limited formulary for stoma accessories: these are regarded as clinically and cost effective choices (see page 4).

All new patients will be assessed for their product needs within the first year, the most significant changes to product use would be in the first 6 weeks. After one year product use would only be altered if medical need or circumstance change.

Flow chart for requests for stoma products on prescription



If it is decided to stop prescriptions for specific accessories, the following statement may help explaining this to patients:

"Our overall aim in prescribing stoma appliances is to provide the best products for each individual patient to avoid sore skin and prevent other problems developing with a stoma. Stoma patients will be supplied with products that are necessary and appropriate. National NHS guidance states that some products should not be routinely recommended: these include deodorants, skin washes, bag covers and underwear. These products will not be supplied unless agreed as being essential by your stoma nurse (or GP). Derbyshire CCG has to make best use of limited NHS resources and so follows this guidance and would expect patients to fund these items themselves."

Source: PrescQIPP guidance on prescribing stoma appliances in General Practice

Stoma Nurse Contact Details:

Practices may refer patients to the Stoma Nursing Team, or patients may self-refer:

Derby Stoma Care Department: off Ward 309, Royal Derby Hospital, Uttoxeter road, Derby DE22 3NE

Office number: 01332 787465

CNS:

Sister Liz Evans 07900820904

Sister Abi Davidson 07766802486

Sister Dianne Smith 07833148866

Sister Lisa Cockram 07500976515

Sister Marie Buckley 07823373874

Sister Sarah King 07471140604

Chesterfield Royal Hospital Stoma Care Team: Calow, Chesterfield, S44 5BL
01246 277271

Product groups which should not be supplied on prescription:

- Stoma Deodorisers (unless use explicitly advised by stoma nurses)
- Skin cleansers and washes (baby wipes suffice)
- Stoma collars, stoma filters
- Liquid or aerosol adhesives
- Lubricants
- Gauze swabs
- **Stoma underwear** will not be routinely prescribed. However hernia prevention wear or management of hernia (support wear) will be prescribed on an individual basis – after specific measurement of requirements by the Stoma Care Nurse
 - Prevention – where clear risk identified = 2 garments per year
 - Actual herniation – 3 garments per year

NHS Derbyshire-wide Stoma Accessories Formulary**Derbyshire Stoma Accessories Formulary**

	Pack size and price (correct May 2018)		Comments	Quantity per month
Medical adhesive removers – either sprays or wipes, should be on repeat prescription, not both				
Sprays: Respond Osto peel (Apple/Blackberry/ Mint)	50ml	£6.67	For patients self-conscious of odour	3 – 6 cans per month should cover the majority of patients
Dansac easi-spray	50ml	£6.68	For patients who have difficulty depressing canisters	
Salts Wipe-Away	50ml	£6.68	Fragranced Chesterfield choice	
Wipes: Salts wipe away	30 wipes	£8.72	For use whilst travelling/ in work etc.	Acute issues only
Respond Ostomart OstoClear	30 wipes	£9.30		If on repeat prescription, 1 wipe per bag change.
Skin barrier products – either sprays or wipes should be prescribed, not both				
Sprays: Cavilon spray	28ml	£5.79	May be needed to prevent skin breakdown, e.g. fat recesses, chemo pts, as well as help heal broken/ weeping skin	1 – 2 issues per 30 colostomy/ 60 ileostomy bags
Respond OstoMart Ostoguard no-sting protective barrier film	50mls	£10.86		

Convatec Sensi-Care sting-free barrier spray	28mls	£5.67	Chesterfield formulary choice (in preference to wipes)	
Cavilon Wipes	30 wipes	£23.50 (78p/wipe)	More suitable for patients with arthritis	1 wipe a day
(Respond) OstoMart Ostoguard no-sting protective barrier film 3ml	30 wipes	£21.18 (71p/wipe)	Good for patients with concurrent eczema. Lavender fragrance	1 wipe a day.
Skin protection powders and pastes – acute issue only				
Oakmed Stoma powder	30g	£2.94		For weeping or broken skin.
Ostomart Ostoseal Powder	50g	£4.92		One pack every 3 – 6 months
Coloplast Brava powder	25g	£2.45	Chesterfield choice	
Convatec Orabase paste	30g	£2.16		Absorbs moisture; skin filler. One tube every 3-6 months.
Barrier creams				
Opus LaVera cream	100g	£10.54	For pts who are sensitive to Cavilon. Patients with ileoanal pouches	
Respond Ostomart Ostoguard barrier cream	60g	£4.99		
Paste: useful in high output ileostomies, aids adhesion. A good seal will prevent seals and bags being replaced more frequently				
Convatec Stomahesive paste	60g	£7.79	Acts as a barrier as well as adhesive	At stoma nurse's discretion
Ilex skin protect	57g	£8.20	Ideal for ileoanal pouches/ stoma granulomas	
Coloplast Brava paste	60g	£6.42	Chesterfield choice	
Flange extenders / security strips: Manufacturer needs to match that of the bag				
Coloplast elastic tape	Box 20	£13.19 (66p per tape)		For extra security if patient has hernia or skin creases.
Convatec Duoderm	Various sizes	Various	Can be used over a wound – protect and seals. Ideal for stomas close together	Used at every pouch change.
Respond Ostomart Astoa adhesive flange extenders	30 per box	£19.28 (64p per tape)	Chesterfield formulary choice	2 tapes per bag change
Seals: For skin protection, filling in dips around the stoma, and for increasing bag use time. Usually for ileostomies / urostomies.				
Varimate (Peak Medical)	Various	Various sizes		
Welland (Clinimed) Hyperseal washers with Manuka honey	Various	Various sizes (£1.28 - £2.14 each)		Approx 90% of urostomy and ileostomy patients will require this

Coloplast Brava Protective Rings	Box 30	£43.89 (£1.46 each)		1 seal/ wafer required at each pouch change
Dansac Gxtra Washers	Box 30	£43.93 (£1.46 each)	Chesterfield choice	
Hollister adapt barrier rings	Box 10 (48mm)	£18.19 (£1.82 each)	Chesterfield choice	
Pouch Clips - rarely needed. Usually for older bags/ 2 piece systems				
Convatec clips	Box of 10	£3.57		1 pack a year
Absorbent sachets / capsules				
Oakmed Gel X	140 per box	£15.73		To thicken up contents in stoma pouch without need for medication 1 – 2 capsules per effluent 2 boxes per month

References / Acknowledgements

This guideline has been developed in consultation with the specialist stoma nurses from Chesterfield Royal Hospital and University Hospitals of Derby and Burton and is adapted from NHS Wiltshire CCG Stoma Appliances Guideline and Formulary.