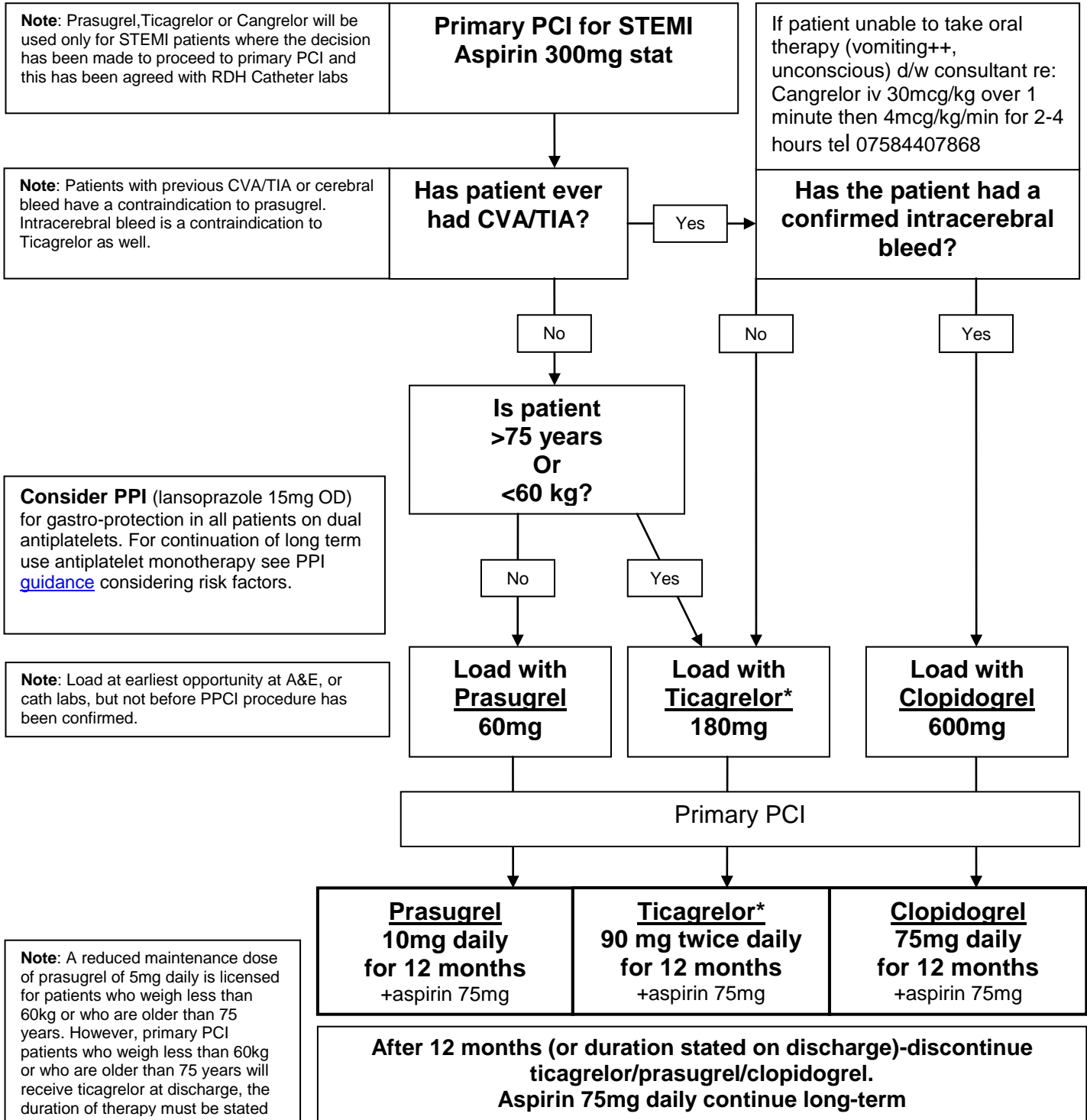


DERBYSHIRE JOINT AREA PRESCRIBING COMMITTEE (JAPC)

University Hospital of Derby and Burton Algorithm for Antiplatelet Therapy in Primary PCI
For STEMI patients not undergoing PCI, NICE recommend aspirin and clopidogrel for at least 4 weeks



* Ticagrelor is contraindicated in patients taking potent CYP3A4 inhibitors (for example, ketoconazole, clarithromycin, nefazodone, ritonavir, or atazanavir) – use clopidogrel. Patients who have a stent thrombosis whilst on clopidogrel (or who are intolerant of clopidogrel) should receive prasugrel (duration and dose at discretion of operator)

Development of Guideline: Dr J Baron, Consultant Cardiologist. Reviewed Dr. Tariq Azeem consultant cardiologist UHDB