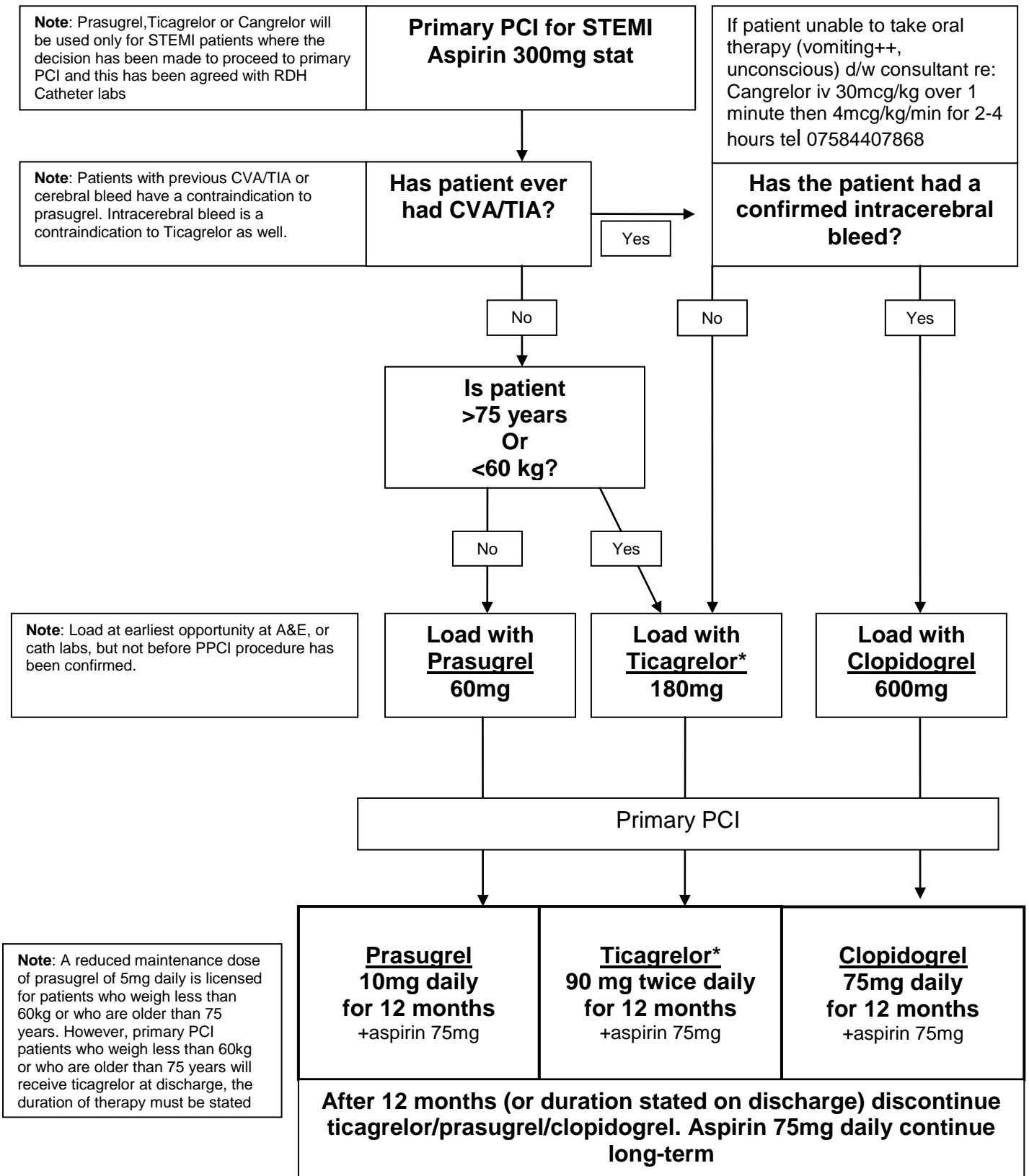


## Southern Derbyshire RDH Algorithm for Antiplatelet Therapy in Primary PCI

For STEMI patients not undergoing PCI, NICE recommend aspirin and clopidogrel for at least 4 weeks



\* Ticagrelor is contraindicated in patients taking potent CYP3A4 inhibitors (for example, ketoconazole, clarithromycin, nefazodone, ritonavir, or atazanavir) – use clopidogrel. Patients who have a stent thrombosis whilst on clopidogrel (or who are intolerant of clopidogrel) should receive prasugrel (duration and dose at discretion of operator)

Key words: ppci, primary PCI, STEMI, ACS, Clopidogrel, ticagrelor, prasugrel, cangrelor, anti platelet, cardiology, MI, acute coronary syndrome, myocardial infarction