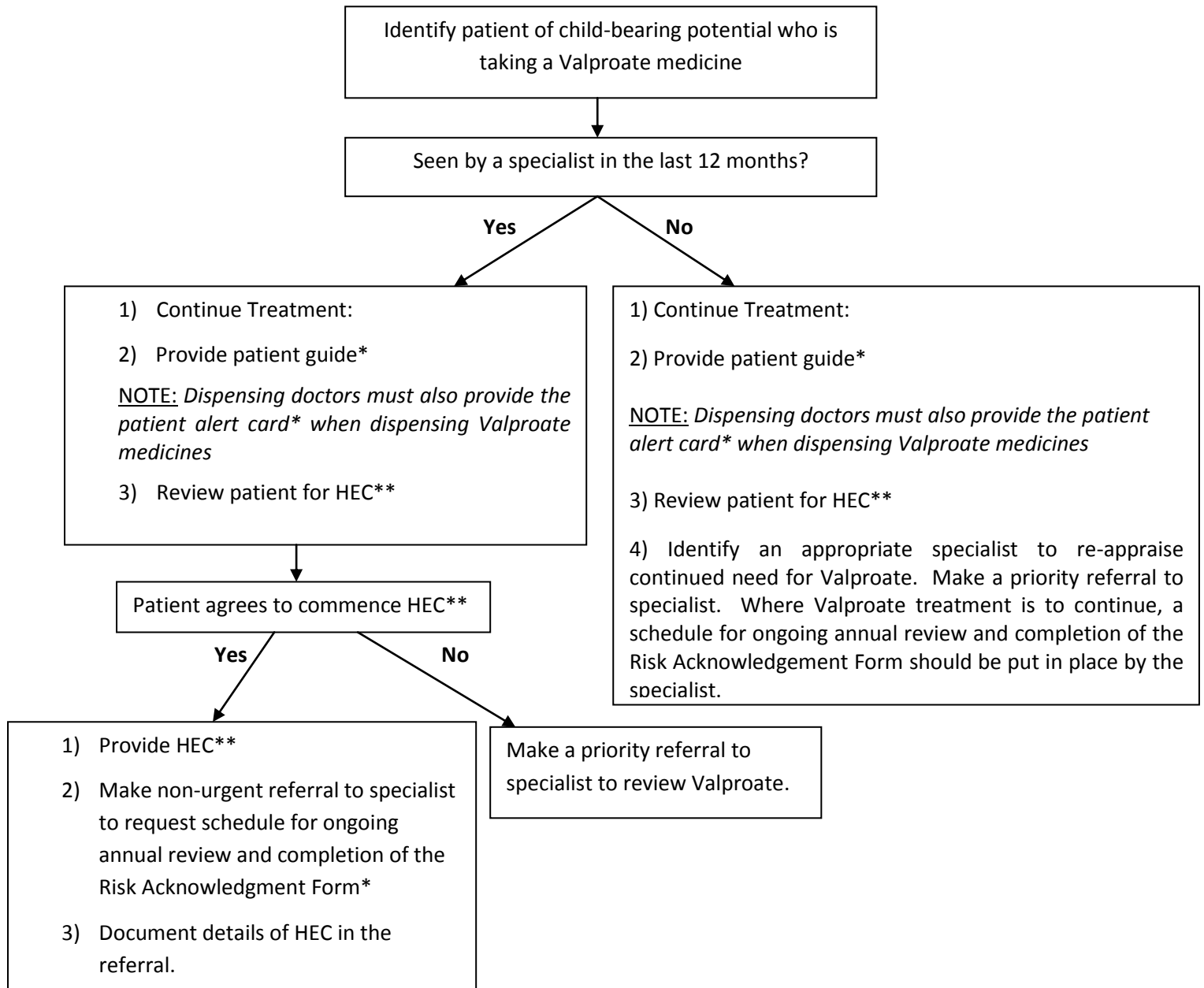


Primary Care pathway for patient referrals to specialists for review in line with the MHRA Valproate medicines Pregnancy Prevention Programme (PPP)



*Supporting information and resources can be found in the MHRA Valproate Toolkit available at this [link](#).

**HEC = Highly Effective Contraception: is considered for regulatory purposes to be those user independent methods such as the long acting reversible contraceptives (LARC), copper intrauterine device (Cu-IUD), levonorgestrel intrauterine system (LNG-IUS) and progestogen-only implant (IMP) and female sterilisation. Where user independent contraception is not used, then two complementary forms of contraception including a barrier method should be used.