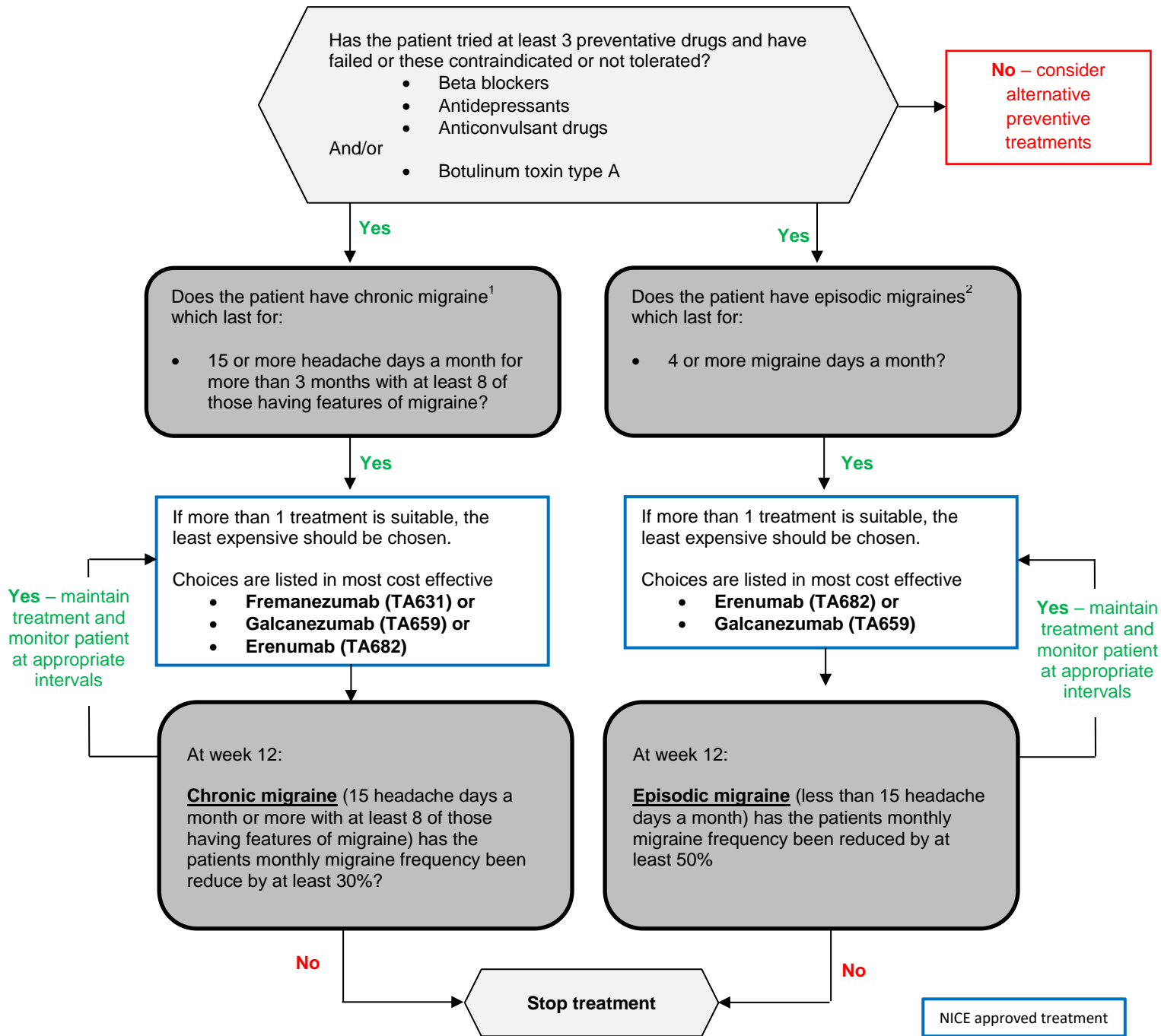


DERBYSHIRE JOINT AREA PRESCRIBING COMMITTEE (JAPC)

Derbyshire commissioning guidance for preventing migraines (March 2021)



¹**Chronic migraine** -15 headache days a month or more with at least 8 of those having features of migraine.
²**Episodic migraine** - less than 15 headache days a month.

The CCG will not commission switching between treatment options. Treatment with another anti-CGRP drug, after failure of a previous anti-CGRP drug, is not supported by evidence and is not recommended by NICE.

Dosing schedule

Biologic		NICE TA	Loading dose	Maintenance dose	Response measured
Fremanezumab SC	Fremanezumab is a humanised monoclonal antibody which selectively binds the neuropeptide calcitonin gene-related peptide (CGRP) ligand and blocks both CGRP isoforms from binding to the CGRP receptor	TA631	N/A	225mg SC once a month or 675mg SC every 3 months	12 weeks
Galcanezumab SC	Galcanezumab is a humanised IgG4 monoclonal antibody that binds calcitonin gene-related peptide (CGRP) thus preventing its biological activity.	TA659	240mg SC	120mg SC once a month	12 weeks
Erenumab SC	Erenumab is a humanised IgG2 monoclonal antibody that targets calcitonin gene-related peptide (CGRP) receptor.	TA682	NA	140mg SC once a month	12 weeks

Drug	Recommended dose
Propranolol	80mg - 160mg once daily
Topiramate	50mg - 100mg once daily
Amitriptyline	25mg - 150mg once daily