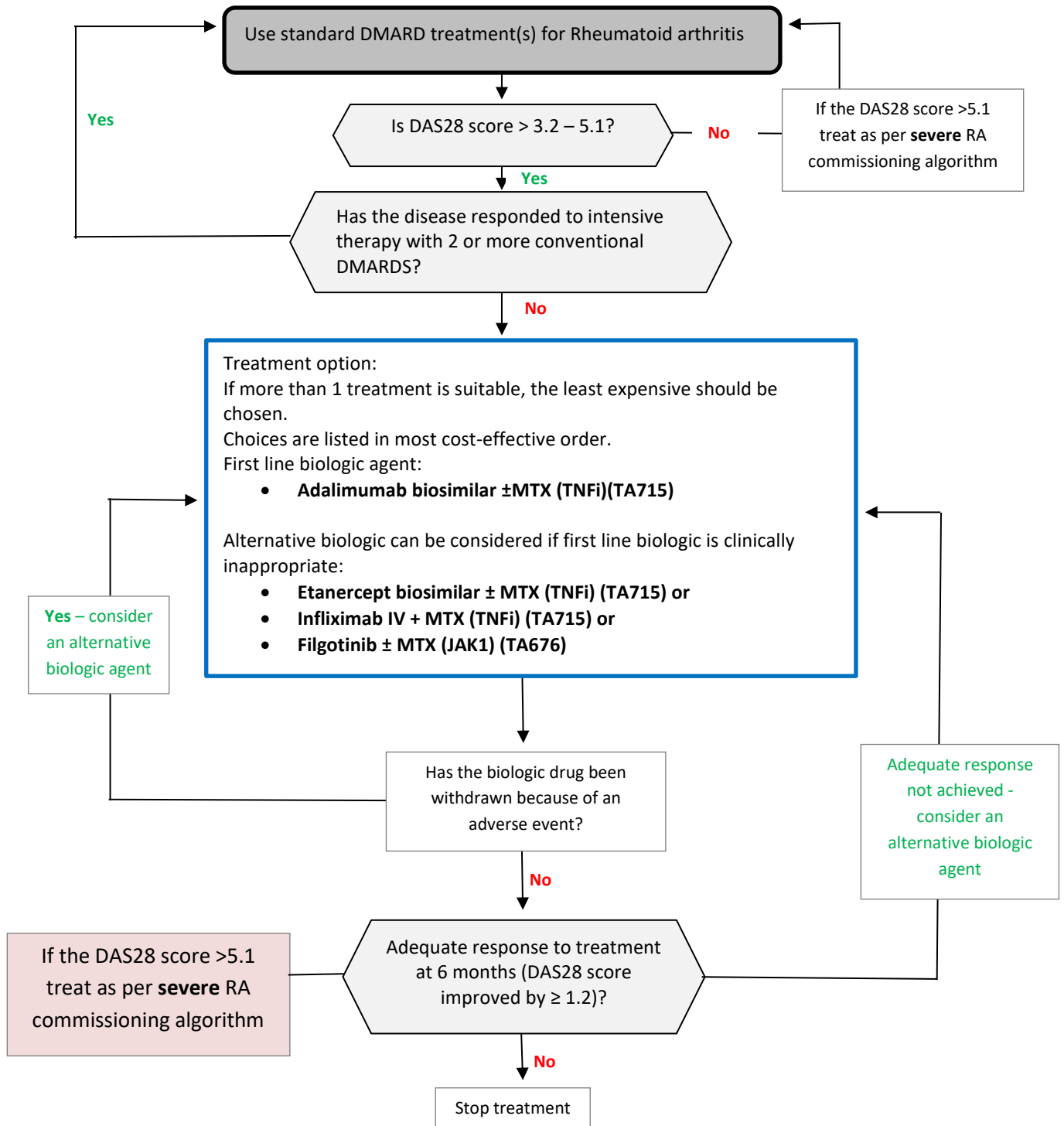


**DERBYSHIRE JOINT AREA PRESCRIBING COMMITTEE (JAPC)**

**Derbyshire commissioning guidance on biologic drugs for the treatment of moderate Rheumatoid arthritis with methotrexate**

This algorithm is a tool to aid the implementation of NICE guidance on biologic drugs for the treatment of rheumatoid arthritis. It includes all of the biologic drugs approved by NICE for treatment and local variations for the commissioning algorithm.



Drug		NICE TA	TA details	Route	Dose
<b>Oral therapies</b>					
<b>Adalimumab (±MTX)</b>	Anti TNF inhibitor	NICE TA715	Active RA for pts who have had an inadequate response to two or more DMARDs	SC	40mg every 2 weeks
<b>Etanercept (± MTX)</b>	Anti TNF inhibitor	NICE TA715	Active RA for pts who have had an inadequate response to two or more DMARDs	SC	25mg twice weekly or 50mg once weekly
<b>Infliximab (+ MTX)</b>	Anti TNF inhibitor	NICE TA715	Active RA for pts who have had an inadequate response to two or more DMARDs	IV only	3 mg/kg at Week 0, 2 and 6 after then every 8 weeks
<b>Filgotinib (±MTX)</b>	Selective JAK1 inhibitor	NICE TA676	Active RA for pts who have had an inadequate response to DMARDs and/or 1 biological DMARD	PO	200mg once daily for adult 18-74 yrs 100mg once daily increasing to 200mg daily if necessary for adult 75 years and over