

DERBYSHIRE JOINT AREA PRESCRIBING COMMITTEE (JAPC)

Guidelines for the prescribing of Stoma Accessories

New stoma patients will be discharged from hospital with at least 2 weeks supply of products.

They will have contact with a Specialist Stoma Nurse within 7 working days of discharge, who will manage the patient's product requirements until they become stable.

The nurse will support the patient to decide on the most appropriate supply route for their appliance products; Community Pharmacy, Dispensing GP or Dispensing Appliance Contractor (DAC).

- Chesterfield Royal Hospital (CRH):**

On discharge all new stoma patients are given a choice dependent on co-morbidities, mobility, access to transport etc., to receive post-operative follow up care either by a community stoma care nurse attached to a DAC or to be seen by the stoma care team in the outpatient department at CRH.

For the first 4-6 weeks the patients' stoma requirements may change as the healing process continues and prescriptions within this time will be requested according to need.

- University Hospitals of Derby and Burton (UHDB):**

Once discharged a specialist community nurse (SCN) will carry out a home visit once a week for the first 6 weeks where the patient's requirements and prescriptions will be requested according to need. Patients are then seen by the SCN at 3, 6, 9 and 12 months post surgery. If there are any unusual/exceptional circumstances where additional products are required, the SCN will contact the GP directly.

Stoma bags (pouches), flanges or belts need to be individually tailored and hence cannot be included in a formulary. For these prescriptions, **GP practices should check the quantities being requested are reasonable as follows:**

Appropriate Quantities and use for stoma items (Table 1)

Appliance	Quantity per month	Prescriptions directions	Normal Usage	Notes
Colostomy bags	30-90 bags*	Remove and discard after use.	1 – 3 per day	Not re-usable. Can be 1 or 2 piece.
Ileostomy bags	10-30 bags**	Drain as required. Use new bag every 1-3 days.	1 every 1 to 3 days	Drainable. Can be 1 or 2 piece.
Urostomy bags	20-30 bags**	Drain as required. Use new bag every 1-3 days.	1 every 1 to 3 days	Drainable. Can be 1 or 2 piece. Require additional night bag.
Night drainage bags	4 bags (1 box of 10 bags every 2-3 months)	Use a new bag every 7 days.	1 per week	Drainable. Rinse as directed by stoma care nurse.
Flange (for 2 piece system)	15 flanges	Change every 2-3 days.	1 every 2 to 3 days	The flange is not changed at every bag change.

Bag Belts – correct according to product	3-6 per year	Usage may vary	variable	Washable and re-usable
---	--------------	----------------	----------	------------------------

*Local adaptation - Please follow the monthly quantities recommended by the specialist stoma teams. There may be circumstances where on specialist advice a patient requires a larger quantity of 120 colostomy bags each month. Please check with the stoma team if any amount appears excessive or a patient is needing more than that recommended by the specialist teams.

**Local adaptation – **Please follow the monthly quantities recommended by the specialist stoma teams. Up to 30 bags per month is an acceptable monthly quantity for both ileostomy and urostomy bags

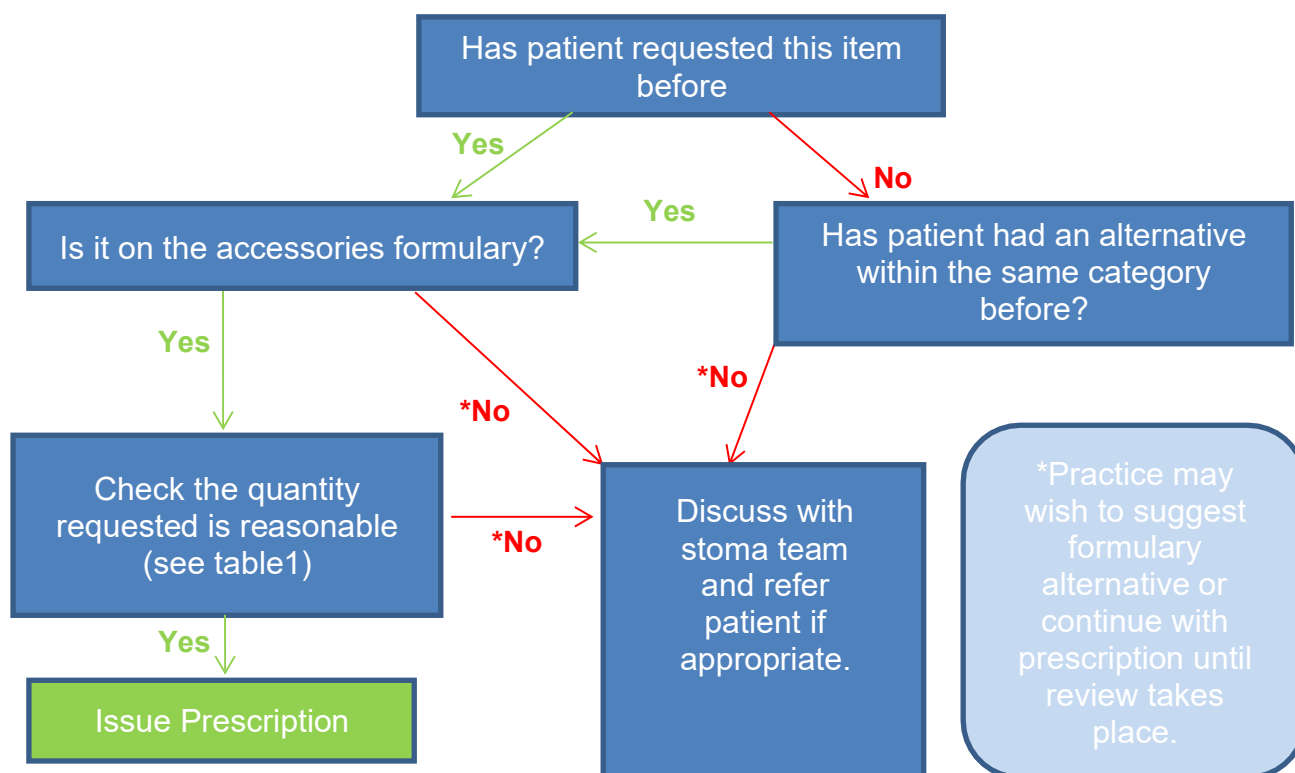
Stoma Accessories Formulary

The Specialist Stoma Nurses have devised a limited formulary for stoma accessories: these are regarded as clinically and cost-effective choices (see page 4)

We would expect most new patients to be started on formulary choices; however, there may be instances when a formulary product is not suitable. This should only occur in exceptional cases and requires justification by the specialist stoma nurse.

All new patients will be assessed for their product needs within the first year, the most significant changes to product use would be in the first 6 weeks. After one year product use would only be altered if medical need or circumstance change.

Flow chart for requests for stoma products on prescription



If it is decided to stop prescriptions for specific accessories, the following statement may help explaining this to patients:

"Our overall aim in prescribing stoma appliances is to provide the best products for each individual patient to avoid sore skin and prevent other problems developing with a stoma. Stoma patients will be supplied with products that are necessary and appropriate. [PrescQipp guidance](#) states that some products should not be routinely recommended: these include deodorants, skin washes, bag covers

and underwear. These products will not be supplied unless agreed as being essential by your stoma nurse (or GP). Derbyshire ICB has to make best use of limited NHS resources and so follows this guidance and would expect patients to fund these items themselves."

Source: PrescQIPP guidance on prescribing stoma appliances in General Practice

Stoma Nurse Contact Details:

Practices may refer patients to the Stoma Nursing Team, or patients may self-refer:

Derby Stoma Care Dept: off Ward 309, Royal Derby Hospital, Uttoxeter road, Derby DE22 3NE.

Office number: 01332 787465

CNS:

Sister Heather Stevenson

Sister Lisa Cockram

Sister Claire Flanagan

Sister Marie Buckley

Chesterfield Royal Hospital Stoma Care Team: Calow, Chesterfield, S44 5BL

Office number: 01246 512715

Lead Specialist Nurse: Catherine Hague

Product groups which should not be supplied on prescription:

- Stoma Deodorisers (unless use explicitly advised by stoma nurses)
- Skin cleansers and washes (baby wipes suffice)
- Stoma collars, stoma filters
- Liquid or aerosol adhesives
- Lubricants
- Gauze swabs
- **Stoma underwear** will not be routinely prescribed. However hernia prevention wear or management of hernia (support wear) will be prescribed on an individual basis – after specific measurement of requirements by the Stoma Care Nurse or a specialist fitter from a hernia support garment company (the stoma care nurses do make referrals to them to support with workload).
 - Prevention – where clear risk identified = 2 garments per year
 - Actual herniation – 3 garments per year

Derbyshire Stoma Accessories Formulary

	Pack size and price (correct Nov 24)	Comments	Quantity per month
Medical adhesive removers – either sprays or wipes, should be on repeat prescription, not both			
Sprays: Brava adhesive remover spray XL 12012	75ml	£10.43	2 – 4 x 75ml cans should cover most patients. (150ml to 300ml monthly)
Dansac EasiSpray	50ml	£7.14	For patients who have dexterity issues or difficulty depressing Canisters 3 – 6 x 50ml cans per month should cover the majority of patients. (150ml to 300ml per month)
Wipes: Lifteez non sting medical adhesive remover wipes.	30 wipes	£8.50	Sprays are the most cost-effective option. Wipes may be considered for convenience when travelling or at work or for dexterity issues when a spray is unsuitable.
StoCare Remove medical adhesive remover wipes.	30 wipes	£8.50	
Skin barrier products – either sprays or wipes should be prescribed, not both			
Sprays: SkinSafe Non-Sting protective film spray	50ml	£8.89 (= £4.97 per 28ml)	May be needed to prevent skin breakdown, e.g., fat recesses, chemo pts, as well as help heal broken/ weeping skin
Medi Derma-S non-sting medical barrier film pump spray 60796	30ml	£5.35 (= £4.99 per 28ml)	For patients that experience bag adhesion problems with a formulary choice barrier spray – please consider an alternative barrier product such as Cavilon
Cutimed Protect spray	28ml	£5.62	

Wipes: StoCare Protect Barrier Film Wipes (STC 250)	30	£12.95	Sprays are the most cost-effective option. Wipes may be considered for convenience when travelling or at work or for dexterity issues when a spray is unsuitable.	If required, recommended use of a maximum of ONE wipe per day as the barrier protection lasts for 24hrs
Secura protective wipes	£25.26	£25.26 (£15.15 per 30) **These are plaster sized wipes**		
Independence Fusion applicator BW2	5 x 3ml	£8.59	For problematic stomas and fistulae only when specifically requested by the Stoma Nurse specialists	
Skin protection powders – acute issue only				
Renew protective powder with aloe vera ABP2	50g	£5.27 (£2.64 per 25g)		These products are by specialist stoma nurse recommendation. For weeping or broken skin. May also be used to help stop bleeding of a stomal granuloma.
Brava Ostomy powder 1907 (Coloplast Ltd)	25g	£2.63		
Orahesive powder (ConvaTec Ltd) S106	25g	£2.71		
Barrier creams – For ileoanal pouches and stoma reversal use, not recommended for use on the skin around a stoma – Specialist stoma nurses will recommend an appropriate product on an individual patient basis				
Zerolon Barrier Cream	28g/92g	£2.44/£5.30	Stoma Nurse recommendation based on individual patient requirements. Ideal for ileoanal pouches.	
Aproderm Barrier Cream	30g/100g	£2.50/£5.50		
Medi Derma-S Barrier Cream	28g/90g	£2.98/£5.95		
Paste: useful in high output ileostomies, aids adhesion. A good seal will prevent seals and bags being replaced more frequently				
Stomahesive paste S105 (ConvaTec Ltd)	60g	£8.45	Acts as a barrier as well as adhesive	At the stoma nurse's discretion
Welland Stoma Paste (CliniMed) (Alcohol-free)	100g	£8.74 (£5.24/60g)		
Brava paste 12050 (Coloplast Ltd) (Alcohol-free)	60g	£6.92		

Brava Coloplast Strip Paste	10 strips	£8.67	Only when specifically requested by the Stoma Nurse specialists	
Flange extenders / security strips and dressings				
Brava Elastic Tape 12070	Box 20	£14.17	2 tapes per bag change	For extra security if patient has a hernia or skin creases.
Brava Elastic Tape XL	Box 20	£16.31	2 tapes per bag change On stoma nurse recommendation and based on size of hernia Some patients may use both standard and XL tapes due to location of hernia	Used at every pouch change.
Salts Flange Extenders SPH1	Box of 30	£13.27	3 tapes per bag change	
DuoDERM Extra Thin	5cm x 10cm 7.5cmx7.5cm 10cm x 10cm 15cm x 15cm	Various	Can be used over a wound – protect and seals. Ideal for stomas close together	
Seals: For skin protection, filling in dips around the stoma, and for increasing bag use time. Usually for ileostomies / urostomies.				
Specialised products that need specialist stoma nurse input for suitability				
Specialised and individual to patient need.				
Please ensure that any prescribing recommendations from stoma nurses regarding specific brands and sizes are continued.				
Approx 90% of urostomy and ileostomy patients will require this				
1 seal/wafer required at each pouch change				
Pouch Clips - rarely needed. Usually for older bags/ 2 piece systems				
Clips (Beige) 1 piece pouch S207 (ConvaTec Ltd)	Box of 10	£3.86		1 pack a year
Curved clip for drainable pouches S202 (ConvaTec Ltd)	Box of 10	£6.85	For use with drainable pouches	
Absorbent sachets / capsules – rarely used by SCN's				
Independence Absorbent Strips P200AS	200	£21.83	To thicken up contents in stoma pouch without need for medication	ONE or TWO strips after emptying if high output

References / Acknowledgements

This guideline has been developed in consultation with the specialist stoma nurses from Chesterfield Royal Hospital and University Hospitals of Derby and Burton.