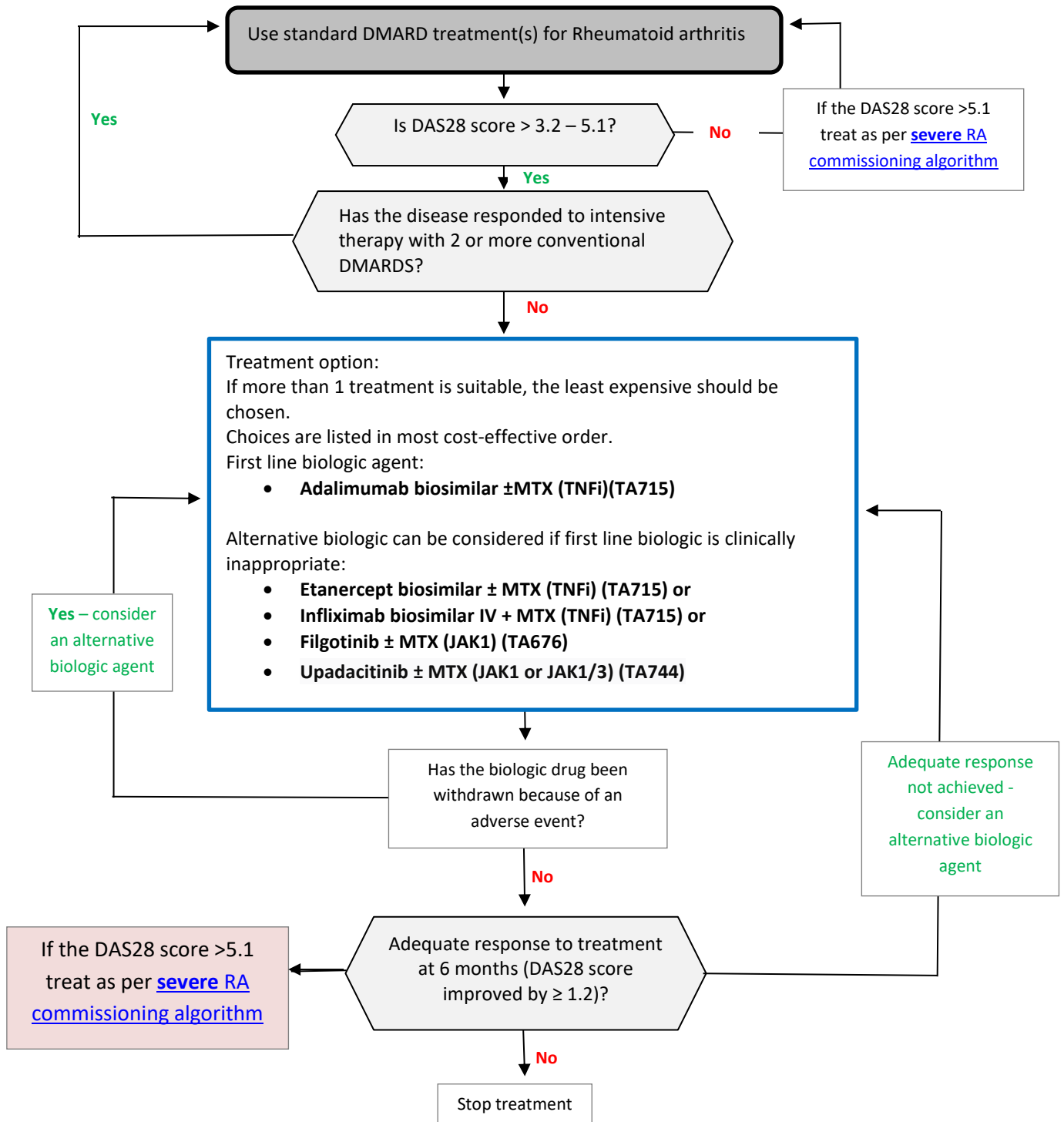


DERBYSHIRE JOINT AREA PRESCRIBING COMMITTEE (JAPC)

Derbyshire commissioning guidance on biologic drugs for the treatment of moderate Rheumatoid arthritis with methotrexate

This algorithm is a tool to aid the implementation of NICE guidance on biologic drugs for the treatment of rheumatoid arthritis. It includes all of the biologic drugs approved by NICE for treatment and local variations for the commissioning algorithm.



Drug		NICE TA	TA details	Route	Dose
Oral therapies					
Adalimumab (±MTX)	Anti TNF inhibitor	NICE TA715	Active RA for pts who have had an inadequate response to two or more conventional DMARDs	SC	40mg every 2 weeks
Etanercept (± MTX)	Anti TNF inhibitor	NICE TA715	Active RA for pts who have had an inadequate response to two or more conventional DMARDs	SC	25mg twice weekly or 50mg once weekly
Infliximab (+ MTX)	Anti TNF inhibitor	NICE TA715	Active RA for pts who have had an inadequate response to two or more conventional DMARDs	IV only	3 mg/kg at Week 0, 2 and 6 after then every 8 weeks
Filgotinib (±MTX)	Selective JAK1 inhibitor	NICE TA676	Active RA for pts who have had an inadequate response to two or more conventional DMARDs.	PO	200mg once daily for adult 18-74 yrs 100mg once daily increasing to 200mg daily if necessary for adult 75 years and over
Upadacitinib (±MTX)	Selective JAK1 or JAK 1/3 inhibitor	NICE TA744	Active RA for pts who have had an inadequate response to two or more conventional DMARDs	PO	15 mg once daily